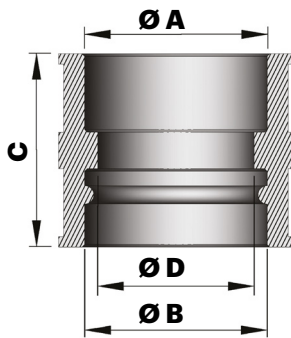
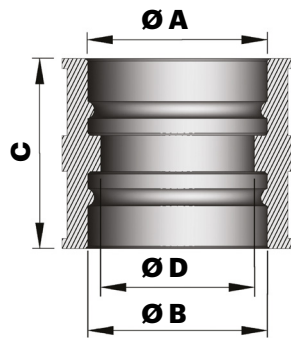
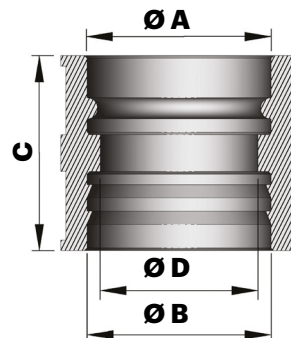
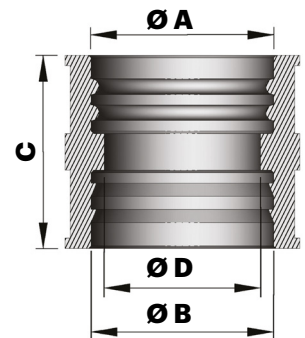


MANCHONS POUR CARBURATEURS

TYPE DESSIN A

TYPE DESSIN B

TYPE DESSIN C

TYPE DESSIN D


| Réf. | A (mm) Ø interne côté collecteur | B (mm) Ø interne côté collecteur | Type de dessin | D (mm) Ø diaphragme | C (mm) hauteur | Carburateurs | Ø carburateur |
|-----------------|---|---|-------------------|---------------------------|-------------------|--------------------------------|------------------|
| 13 6085B | 24 | 25 (1 gorge) | A | 21 | 37 | Dell'Orto PHBG B | 15-21 |
| 1311128B | 24 | 25 (1 gorge) | A | 21 | 32 | Dell'Orto PHBG B | 15-21 |
| 13 6110B | 22 | 20 | - | 19 | 30 | Dell'Orto PHBG B | 15-19 |
| 13 4579B | 29 | 30 (1 gorge) | A | 25 | 37 | Dell'Orto PHBL B | 20-25 |
| 13 4814B | 30 (1 gorge) | 30 (1 gorge) | B | 25 | 37 | Dell'Orto PHBL - PHBG | 19-25 |
| 13 0399B | 33 (2 gorges) | 33 (2 gorges) | D | 26 | 39.5 | Dell'Orto VHB F | 24-26 |
| 13 1433B | 35 (1 gorge) | 35 (1 gorge) | B | 30 | 37 | Dell'Orto PHBH B | 29-30 |
| 13 1012B | 40 (1 gorge) | 44 (2 gorges) | C | 32 | 36 | Dell'Orto PHBE - PHF | 30-34 |
| 13 0397B | 44 (2 gorges) | 44 (2 gorges) | D | 36 | 37 | Dell'Orto PHBE - PHF | 32-36 |
| 13 0929B | 45 (1 gorge) | 45 (1 gorge) | B | 39 | 35 | Bing - Mikuni Dell'Orto PHM | 45 |
| 13 2309B | 51 (1 gorge) | 45 (1 gorge) | D | 39 | 33 | Dell'Orto PHM | 40 |