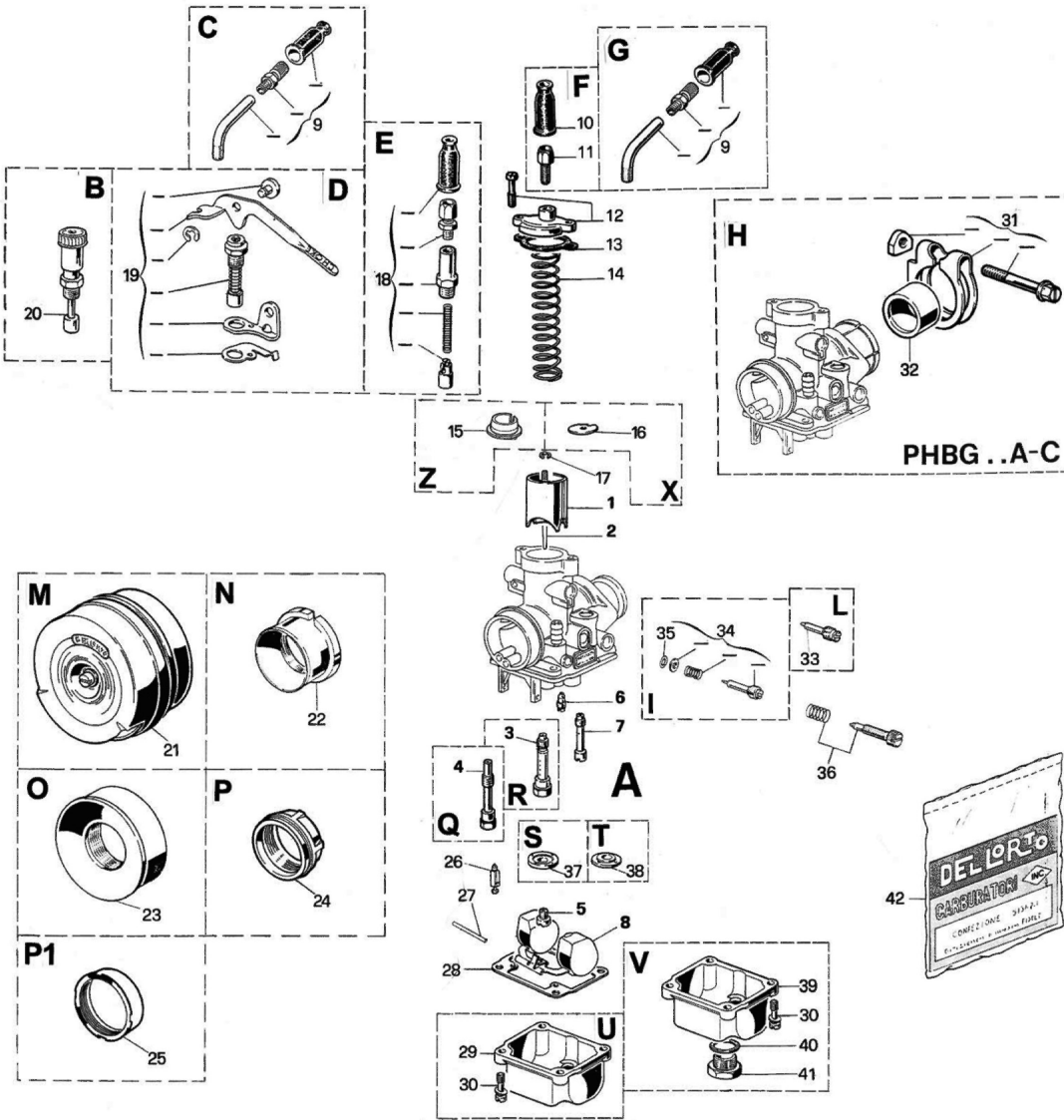


A02509 - 2509 CARB. PHBG 20 BS

CARBURETOR SPARE PARTS FILE



N°	Part Number	Description	Qty
0	A02509	2509 CARB. PHBG 20 BS	1
1	B09475.040	9475 SLIDE 40	1
2	B09595.007	9595 CONICAL NEEDLE W 7	1
4	B09654.262	9654 NEEDLE JET AU 262	1
5	B01486.090	1486 PILOT JET 90	1
6	B01488.050	1488 JET 50	1
7	B09501.060	9501 JET 60	1
8	B09450.001	9450 FLOAT 1 gr. 4	1
10	B01476	1476 CAP	1
11	B01104	1104 SCREW	1
12	B53031	53031 SLIDE COVER KIT PHBG	1
13	B52526	52526 GASKETS KIT PHBG/A-B-C-D	1
14	B09597	9597 SPRING	1
15	B14958	14958 CLIP	1
17	B09596	9596 CLIP	1
20	B09538	9538 STARTER	1
26	B02838	2838 FUEL BLANKING NEEDLE	1
27	B09506	9506 PIN	1
28	B52526	52526 GASKETS KIT PHBG/A-B-C-D	1
29	B09444	9444 BOWL	1
30	B11836	11836 SCREW	4
34	B53024	53024 SCREW KIT for MIN.REG. PHBG	1
35	B52526	52526 GASKETS KIT PHBG/A-B-C-D	1
36	B53027	53027 SCREW KIT for SLIDE REG. PHBG	1
37	B13548	13548 BOTTOM	1
40	B52526	52526 GASKETS KIT PHBG/A-B-C-D	1
42	B52526	52526 GASKETS KIT PHBG/A-B-C-D	1