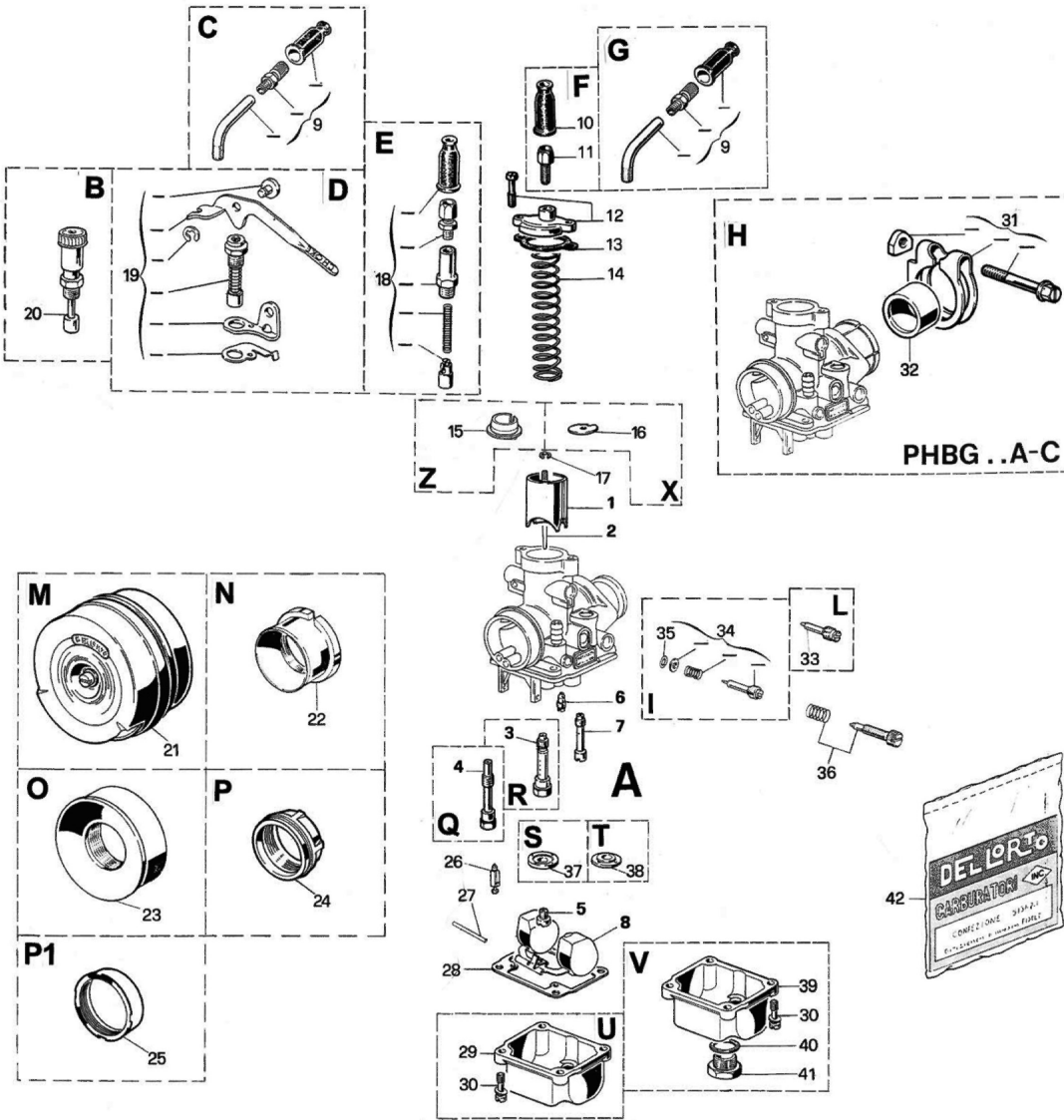


A02513 - 2513 CARB. PHBG 19 AD

CARBURETOR SPARE PARTS FILE



| N° | Part Number | Description | Qty |
|----|-------------------|-------------------------------------|-----|
| 0 | A02513 | 2513 CARB. PHBG 19 AD | 1 |
| 1 | B09475.040 | 9475 SLIDE 40 | 1 |
| 2 | B09595.007 | 9595 CONICAL NEEDLE W 7 | 1 |
| 4 | B09654.262 | 9654 NEEDLE JET AU 262 | 1 |
| 5 | B01486.085 | 1486 PILOT JET 85 | 1 |
| 6 | B01488.050 | 1488 JET 50 | 1 |
| 7 | B09501.060 | 9501 JET 60 | 1 |
| 8 | B09450.001 | 9450 FLOAT 1 gr. 4 | 1 |
| 10 | B01476 | 1476 CAP | 1 |
| 11 | B01104 | 1104 SCREW | 1 |
| 12 | B53031 | 53031 SLIDE COVER KIT PHBG | 1 |
| 13 | B52526 | 52526 GASKETS KIT PHBG/A-B-C-D | 1 |
| 14 | B09597 | 9597 SPRING | 1 |
| 15 | B14958 | 14958 CLIP | 1 |
| 17 | B09596 | 9596 CLIP | 1 |
| 20 | B09538 | 9538 STARTER | 1 |
| 26 | B02838 | 2838 FUEL BLANKING NEEDLE | 1 |
| 27 | B09506 | 9506 PIN | 1 |
| 28 | B52526 | 52526 GASKETS KIT PHBG/A-B-C-D | 1 |
| 29 | B09444 | 9444 BOWL | 1 |
| 30 | B11836 | 11836 SCREW | 4 |
| 31 | B53016 | 53016 CLAMP KIT Ø 30 PHBG-SHBC | 1 |
| 32 | B08376 | 8376 INSULATING ADAPTER | 1 |
| 34 | B53024 | 53024 SCREW KIT for MIN.REG. PHBG | 1 |
| 35 | B52526 | 52526 GASKETS KIT PHBG/A-B-C-D | 1 |
| 36 | B53027 | 53027 SCREW KIT for SLIDE REG. PHBG | 1 |
| 37 | B09779 | 9779 BOTTOM | 1 |
| 40 | B52526 | 52526 GASKETS KIT PHBG/A-B-C-D | 1 |
| 42 | B52526 | 52526 GASKETS KIT PHBG/A-B-C-D | 1 |

